



SOUTHERN BAY RACE WEEK

JUNE 1, 2, 3, 2018

SAILING INSTRUCTIONS

**Organizing Authorities:
Hampton Yacht Club
Cruising Club of Virginia
Old Point Comfort Yacht Club**

The notation (DP) after a rule means that, at the discretion of the Protest Committee, the penalty for a breach of that rule may be less than DSQ. The notation (RC) after a rule means that only the Race Committee or Protest Committee can protest a breach of that rule.

1. RULES

- 1.1** The regatta will be governed by the Racing Rules of Sailing, 2017-2020, as modified herein.
- 1.2** US Sailing Prescriptions to RRS 63.2 and 63.4 will not apply.
- 1.3** J/70 Class Rules, I.1 (Spare Gennaker) and I.3 (Support Boats) will apply.
- 1.4** For the One-Design Course only, Appendix V1 (Penalty at the Time of the Incident) is in effect.

2. ENTRIES

- 2.1** The regatta is open to monohull keelboats or multihulls, provided each is over 20 feet LOA.
- 2.2** All participating boats must meet current PHRF Equipment Category Ches Bay requirements, except that One-Design Fleets must meet safety standards of their class rules.
- 2.3** Eligible boats may enter by doing one of the following:
 - a. Entering online at www.yachtscoring.com ,
 - b. Completing an official SBRW Entry Form (available at www.yachtscoring.com) and mailing it to Lin McCarthy, 4401 Chesapeake Ave, Hampton, VA 23669.
- 2.4** All boats, except those in the Cruising Class, must have a current, valid measurement certificate on file with their appropriate Class Association.
 - a. PHRF ratings will be those posted on the PHRF of the Chesapeake Valid List at the time of the event or a temporary rating issued by a handicapper of PHRF of the Chesapeake.
 - b. Multihulls must have a current, valid rating from Chesapeake Multihull Association (CMA).
 - c. Cruising Class ratings will be assigned by the Race Committee and may not be appealed.
- 2.5** An entered boat may not change fleets later than 1800 on Thursday, May 31.
- 2.6** The owner/skipper of each boat entered shall be responsible for the actions of his/her crew and guests. The legal drinking age in Virginia is 21 years old. Proof of age will be required. In the event of a serious breach of conduct, sportsmanship, destruction of property, under age drinking, or failure to comply with a request from any regatta official, the boat or competitor may be subject to expulsion from the regatta.

3. BOAT REQUIREMENTS

- 3.1** A bow number/decal will be supplied to each boat and shall be properly affixed to both sides of the hull while racing. Mounting instructions will be supplied with the decal. *(DP)*
- 3.2** Once launched, all boats (except Vipers) shall remain in the water until the conclusion of the regatta, except with prior written permission of the PRO. *(DP)*
- 3.3** All boats (except Cruising Class) shall display either the sail number issued by their National Authority (US Sailing) or the number as maintained by their fleet or class. **All sail numbers on a boat must be the same**, except with prior written permission from the PRO. *(DP) (RC)*
- 3.4** From the backstay, each boat shall display her class flag or ribbon as per Appendix F. *(DP)*

4. NOTICES TO COMPETITORS & CHANGES TO SAILING INSTRUCTIONS

- 4.1** Notices to competitors will be posted on the Official Notice Board located in the regatta tent.
- 4.2** Changes to these Sailing Instructions will be posted by 0800 on the day they will take effect, except that any change to the schedule of races will be posted no later than the expiration of the protest time limit on the day before it will take effect.

5. SIGNALS MADE ASHORE

- 5.1** Signals made ashore will be displayed at the HYC flagpole.
- 5.2** The display of Flag "AP" ashore accompanied by two sound signals means the start of racing is postponed. The lowering of Flag "AP" ashore with one sound signal means the Warning Signal for the next race shall be made in not less than 60 minutes. This changes RRS Race Signals "AP".
- 5.3** On a given day, any abandonment, postponement ashore, or relocation of racing to the harbor will be broadcast on the designated VHF radio channels at approximately 0830 and repeated periodically for as long as the RC deems necessary. If the decision to relocate racing is made later than 0830, the radio announcement will be made ASAP. Neither the decision to relocate racing nor the timing of the announcement will be grounds for redress. This changes RRS 62.1 (a).

6. RACING AREAS AND RENDEZVOUS

**** Rendezvous locations for each day are as follows:**

6.1 One-Design Course:

- (a) Friday:** Multiple windward/leeward races in harbor. (See Appendix B)
Rendezvous at: 36 56.97 N 76 22.40 W Y N "J" NE of Mid. Ground Lt
- (b) Saturday:** Multiple windward/leeward races in harbor. (See Appendix B)
Rendezvous at: 36 58.13 N 76 22.00 W R N "20" off Hampton Flats
**** Note:** Should PHRF racing be relocated into the harbor on Saturday,
OD boats shall rendezvous and race off Craney Island, as on Friday.
**** Note:** Additionally, the OD Warning Signal will be delayed until 1100.
- (c) Sunday:** Multiple windward/leeward races in harbor. (See Appendix B)
Rendezvous at: 36 58.13 N 76 22.00 W R N "20" off Hampton Flats

6.2 PHRF Course:

- (a) Friday:** Multiple windward/leeward races in harbor. (See Appendix C)
Rendezvous at: 36 58.13 N 76 22.00 W R N "20" off Hampton Flats
- (b) Saturday:** SBRW Distance Race in Bay. (See Appendix D)
Rendezvous at: 37 01.98 N 76 15.75 W R "2" off Buckroe
**** Note:** Should the Distance Race be relocated into the harbor on Saturday,
rendezvous and race in the harbor as per Appendix D, Page 2.
- (c) Sunday:** Multiple windward/leeward races in harbor. (See Appendix C)
Rendezvous at: 36 56.97 N 76 22.40 W Y N "J" NE of Mid. Ground Lt

6.3 Cruising/Multihull Course:

- (a) **Friday: (Multis only)** Two Middle Distance races in Bay. (See Appendix E)
Rendezvous at 37 01.98 N 76 15.75 W (R "2" off Buckroe)
**** Note:** Should racing be relocated into the harbor on Friday,
rendezvous and race in the harbor and race as per Appendix E, Page 2.
- (b) **Saturday: (Cru & Multis)** SBRW Distance Race in Bay. (See Appendix D)
Rendezvous at: 37 01.98 N 76 15.75 W R "2" off Buckroe
**** Note:** Should the Distance Race be relocated into the harbor on Saturday,
rendezvous and race in the harbor and race as per Appendix D, Page 2
- (c) **Sunday: (Cru & Multis)** One Middle Distance Race in Bay. (See Appendix E)
Rendezvous at: 37 01.98 N 76 15.75 W R "2" off Bukroe
**** Note:** Should racing be relocated into the harbor on Sunday,
rendezvous and race in the harbor and race as per Appendix E (Page 2).

****Note to all fleets: Rendezvous locations are approximate. The RC may locate the starting line within 1 nm of the designated rendezvous point without flying Flag L.**

7.0 Daily Schedules

Thursday, May 31

Opening Party 1800 - 2000
(free beer and food)
Skippers Meeting 1900

Friday, June 1

Warning 1000
Beer tap open 1600
Party, music, food 1700 - 2000
Daily Awards 1915 (approx.)

Saturday, June 2

Warning 1000
Beer tap open 1600
Party, music, food 1700 - 2100
Daily Awards 1915 (approx.)

Sunday, June 3

Warning 1000
Party & Awards ASAP after racing
**On Sunday, no starting sequence
may begin after 1415.**

**** Flag "A" displayed with no sound while boats are finishing means "No more racing today".**

8. COURSES

8.1 Information for each course is promulgated in the following Appendices:

- Appendix A** shows the Racing Areas for each day.
- Appendix B** contains information on the One-Design Course for all three days.
- Appendix C** contains information on the PHRF Course for Friday & Sunday.
- Appendix D** contains information on Saturday's SBRW Distance Race.
- Appendix E** contains information on the Cruising/Multihull Course.
- Appendix F** contains information on Classes, Fleet Splits, Flags, and Order of Starts.

8.2 When appropriate, prior to the Warning Signal course information will be displayed on a course board located on the RC Signal Boat.

8.3 The RC may also broadcast the course information via the designated VHF radio channel for that course.

9. CLASSES, FLEET SPLITS, AND ORDER OF STARTS

Classes, Fleet Splits and Order of Starts (Appendix F) will be officially announced, posted, and distributed at the Thursday Skippers Meeting. Preliminary, unofficial information will be posted and updated at HYC and on the event website at www.yachtscoring.com prior to the regatta. Classes will be organized and, if necessary, sub-divided to produce the best racing.

10. MARKS

10.1 PHRF & One-Design Windward/Leeward Mark Descriptions:

Long Weather Mark (Mark 1)	5' Orange Cylinder - w/ black band
Short Weather Mark (Mark 2)	3' Orange Inflatable
Weather Offset Mark	Red Ball (OD Course <u>only</u>)
Change Mark	3' Yellow Inflatable
Leeward Gate (3s & 3p)	"West Marine" Yellow Inflatables
Starting Pin	5' Green Cylinder
Finish Pin	Red Ball

10.2 For Saturday's SBRW Distance Race: See Appendix D.

10.3 For Cruising & Multihull Courses: See Appendix E.

11. BOAT CHECK-IN

Before the warning signal for her first race each day, each boat shall pass by the stern of the RC Signal Boat and hail her name and/or sail number until acknowledged by the RC. *(DP) (RC)*

12. THE START

12.1 Races will be started using RRS 26 as modified by Instruction 12.2 below.

12.2 Approximately one (1) minute prior to the beginning of a starting sequence, the RC will make an Attention Signal consisting of a series of short sounds. This is not a timed signal.

12.3 For all windward/leeward courses, the starting line will be between the staff displaying an orange flag on the RC Signal Boat at the starboard end of the line and a green cylinder at the port end.

12.4 Appendix D describes the SBRW Distance race starting line.

12.5 For Saturday's Distance Race in the Bay only, at its own discretion, the RC may move the starting line to Mark X (see Appendix D). To do this, the RC will display Flag "L" with one sound and motor to Mark X, where they will establish a new starting line. The RC's decision to move or not to move the starting line shall not be grounds for redress. This changes RRS 62.1 (a).

12.6 Appendix E describes the Cruising/Multihull starting lines.

13. COLLISION WITH RACE COMMITTEE BOAT

If any boat collides with any Race Committee vessel and causes injury or serious damage, her penalty shall be to retire. *(DP)*

14. RECALLS

14.1 Individual Recalls will be signaled in accordance with RRS 29.1. Additionally, the Race Committee will attempt to notify premature starters via hail on the designated VHF radio channel for that course.

14.2 Failure of this transmission to be made or received, promptness of the notification, or the position of a boat in the notification sequence shall not be grounds for redress. This changes RRS 62.1 (a).

15. COURSE CHANGE AFTER START

15.1 To change the next leg of the course, the Race Committee will lay a new mark and remove the original mark as soon as practicable.

15.2 If the course is changed after the start, only one change mark will be set. All boats shall round this single change mark.

15.3 A gate may be adjusted at any time w/out signal.

16. SHORTENING COURSE

16.1 Courses may be shortened as per RRS 32.

16.2 For Saturday's SBRW Distance Race, the final sentence of RRS 32.2 is changed to read:
"A course may be shortened even if a boat has already passed the mark at which the race is to be shortened, provided an RC boat is on station and records the exact time at which each boat rounds that mark." All boats will be scored using the time they passed the mark at which the course is shortened.

17. THE FINISH

17.1 For all windward/leeward courses, the finish line will be on the opposite side of the RC Signal Boat from the starting line. The finish line will be between the staff displaying an orange flag on the RC Signal Boat at the starboard end of the finish line and a red ball at the port end (looking downwind). The finish line will be located approx. 600' to leeward of the leeward mark or gate. (See Appendices B & C).

17.2 For Saturday's Distance Race in the Bay, the finish line will be between CCV Bay Mark Q (R "22") at the port end of the line and the staff displaying an orange flag on the Fort Monroe Seawall at the starboard end. (See Appendix D) If Saturday's Distance Race is moved into the harbor, the finish will be as per Appendix D, Page 2.

17.3 For Friday's Multihull Courses and Sunday's Cruising/Multihull Course, the finish line will be between the RC Signal Boat at one end of the line and CCV Mark "Y", R "2" off Buckroe. (See Appendix E) If racing is moved into the harbor, the finish will be as per Appendix E, Page 2.

17.4 For all courses, each boat is responsible for taking her own finish time and recording the name and/or sail number of the boat finishing directly ahead and astern of her. This information shall be provided to the Race Committee upon request.

18. THE PENALTY SYSTEM

18.1 For the One-Design Course only, Appendix V1 (Penalty at the Time of the Incident) is in effect.

18.2 For all other courses, RRS 44.1 is in effect.

19. CALLING BOATS IN

19.1 In the interest of starting another race or completing the day's racing in a timely fashion, the Race Committee may assign a finish position to any boat(s) still racing, provided the position(s) can be determined in a reasonable manner. Such boat(s) will be scored as finished. This changes RRS 28.1, 35, A3, and A4.1 and A4.2.

19.2 If another race is to be sailed that day, any boats called in as per S.I. 19.1 shall proceed as quickly as possible to the starting area to facilitate prompt starting of the next race. (DP)

20. TIME LIMITS

20.1 For the One-Design Course, any race in which no boat sails the course and finishes within two (2) hours after the start of her fleet will be abandoned for that fleet. Also, any boat still racing but not finished within 20 minutes after the first boat in her fleet sails the course and finishes within the time limit will be scored TLE (Time Limit Expired) without a hearing.

20.2 For the PHRF Course on Friday and Sunday, any race in which no boat sails the course and finishes within 2 ½ hours after the start of that fleet will be abandoned for that fleet. Also, any boat still racing but not finished within 30 minutes after the first boat in her fleet sails the course and finishes within the time limit will be scored TLE (Time Limit Expired) without a hearing.

20.3 For the Distance Race on Saturday, the time limit for all boats to finish is 1615. Boats still racing but not finished by 1615 will be scored TLE (Time Limit Expired) without a hearing.

20.4 For the Multihull Fleet on Friday, any race in which no boat sails the course and finishes within 3 1/2 hours after the start of that fleet will be abandoned for that fleet. Also, any boat still racing but not finished within 45 minutes after the first boat in her fleet sails the course and finishes within the time limit will be scored TLE (Time Limit Expired) without a hearing.

20.5 For the Cruising/Multihull Course on Sunday, the time limit for all boats to finish is 1415. Boats still racing but not finished by 1415 will be scored TLE (Time Limit Expired).

20.6 A boat scored TLE (Time Limit Expired) will, without a hearing, be scored one point more than the number of boats in her fleet who sailed the course properly and finished within the time limit. In no case may this score be more than the number of boats entered in her fleet. This changes RRS 35, A4.2, A5, and A11.

21. RETIRING

Any boat retiring from a race or leaving the racing area prior to a subsequent race that day shall promptly notify the Race Committee for her course, either by hail or radio transmission on the designated VHF radio channel. Such attempt at notification shall be continued until acknowledged by the Race Committee. *(DP) (RC)*

22. TOWING (One-Design Course only)

No boat may be towed unless the RC has given permission via the appropriate fleet radio channel for boats to be towed. The RC decision to tow or not to tow shall not be grounds for redress. This changes RRS 62.1. *(DP)*

23. SCORING

23.1 The regatta will be scored using the Low Point Scoring System of Appendix A.

23.2 Method and Ratings:

a. All PHRF and Cruising Fleets will be scored Time on Distance. The Windward/Leeward rating will be used for all PHRF races, including Saturday.

b. Multihulls will be scored Time on Time, using CMA ratings, as per Instruction 2.4(b).

23.3 Appendix A2 is modified as follows:

a. If fewer than six (6) races are completed, a boat's series score will be the total of her race scores.

b. If six (6) or more races are completed, a boat's series score will be the total of her scores, excluding her worst excludable score.

23.4 The completion of at least one race will constitute a regatta.

23.5 All scoring and race results will be posted on www.yachtscoring.com. In addition, printed results will be posted on the window at the NE corner of the HYC lounge.

23.6 Daily trophies will be computed by combining all races for that day into a single score.

23.7 All races will be considered separately for overall Race Week scoring.

24. PROTESTS

24.1 The Judges Table and Protest Notice Board will be located in the NE corner of the HYC lounge.

24.2 Written protests must be delivered to the Judges' Table within one hour of the RC Signal Boat for that boat's course docking at HYC. Protest forms will be available at the Judges Table.

24.3 US Sailing Prescriptions to RRS 63.2 and 63.4 will not apply.

24.4 All protest information including time limits, hearing schedules, and results of hearings will be posted on the Protest Notice Board. It is each boat's responsibility to check this board to see if she is cited in a protest, called as a witness, or has interest at a hearing.

24.5 A notice of protests filed and approximate hearing times will be posted on the Protest Notice Board within twenty (20) minutes after the expiration of the Protest Time Limit. This posting constitutes the notice required for Race Committee and/or Protest Committee protests required under RRS 61.1 (b). This changes RRS 61.1 (b).

24.6 If the RC posts a list of boats scored OCS or ZFP on the Protest Notice Board before the Protest Time Limit, a request for redress based on the posted score shall be made no later than fifteen (15) minutes after the Protest Time Limit. This changes RRS 62.2

24.7 On Sunday, a request for redress from a jury decision shall be delivered no later than thirty (30) minutes after the decision was posted. This changes RRS 62.2.

25. RADIOS

25.1 All boats shall carry a working VHF radio. *(DP)*

25.2 Except in an emergency, a boat that is racing shall not make voice or data transmissions and shall not receive voice or data communications that are not available to all boats. This restriction also applies to mobile telephones. *(DP)*

25.3 The Race Committee will not respond to transmissions from competitors except to acknowledge retirements, protests, penalties reported or taken, or requests for emergency assistance.

25.4 Race Committee broadcasts of its intentions, courses to be sailed, flag sequences, postponement updates, etc. are as a courtesy only and in no way relieve competitors of their responsibility to monitor and respond to Race Committee flags and signals.

25.5 Failure of the RC to make a broadcast, the timing of a broadcast, or failure of a boat to hear a broadcast, shall not be grounds for redress under RRS 62.1(a).

25.6 The designated radio frequency for each course is:

- | | |
|---------------------------------------------|------------------------------------------------|
| a. One-Design Course (Daily) | VHF-71 |
| b. PHRF Course (Friday & Sunday) | VHF-72 |
| c. SBRW Distance Race (Saturday) | VHF-72 (Finish Line on Seawall = VHF-9) |
| d. Multihull Course (Friday) | VHF-73 |
| e. Cruising/Multihulls (Sunday) | VHF-73 |

26. COMMERCIAL TRAFFIC

26.1 A boat shall not exercise right of way over, cross in close proximity to, or interfere with reasonable transit of the race area by military vessels, commercial freighters, tugs and tows, or other commercial vessels that are unable to respond readily. Any boat protested under this rule shall have the burden of proving that she did not interfere with such vessel.

26.2 If a boat without way in a ship channel infringes RRS 42.1 by using her engine to clear the channel, she may continue racing but, at the finish line, must inform the Race Committee of the incident and, at a subsequent hearing, must satisfy the Protest Committee that she gained no advantage by using her engine. RRS 62.1 is changed to allow consideration of this request. *(DP)*

27. AWARDS

27.1 Appropriate daily and series awards will be given to boats in each fleet.

27.2 A Boat of the Day Flag will be presented each day to the outstanding boat in each Division.

27.3 Other "Special Awards" flags may be presented daily and on Sunday.

27.4 RRS 56 is changed to allow a boat to fly these award flags from the backstay while racing.

27.5 The Black Seal Cup (Boat of the Week) will be presented at the awards ceremony Sunday.

28. MEDIA RIGHTS

By their entry, competitors give absolute right and permission for any photograph or video footage of themselves or the boat they are sailing to be published in any media the regatta organizers see fit.

29. DISCLAIMER OF LIABILITY

29.1 Competitors participate in the regatta entirely at their own risk. See rule 4, Decision to Race. The organizing authority will not accept any liability for material damage or personal injury or death sustained in conjunction with or prior to, during, or after the regatta.

29.2 The safety of a boat and its crew is the sole responsibility of the Skipper who must ensure that the boat is sound, seaworthy, and manned by a competent crew of appropriate number.

30. REGATTA CONTACTS AND OFFICIALS:

Regatta Chairman = Jack Pope

Registration & Info = Lin McCarthy (757) 850-4225 mcbear@earthlink.net

Principal Race Officer = John McCarthy

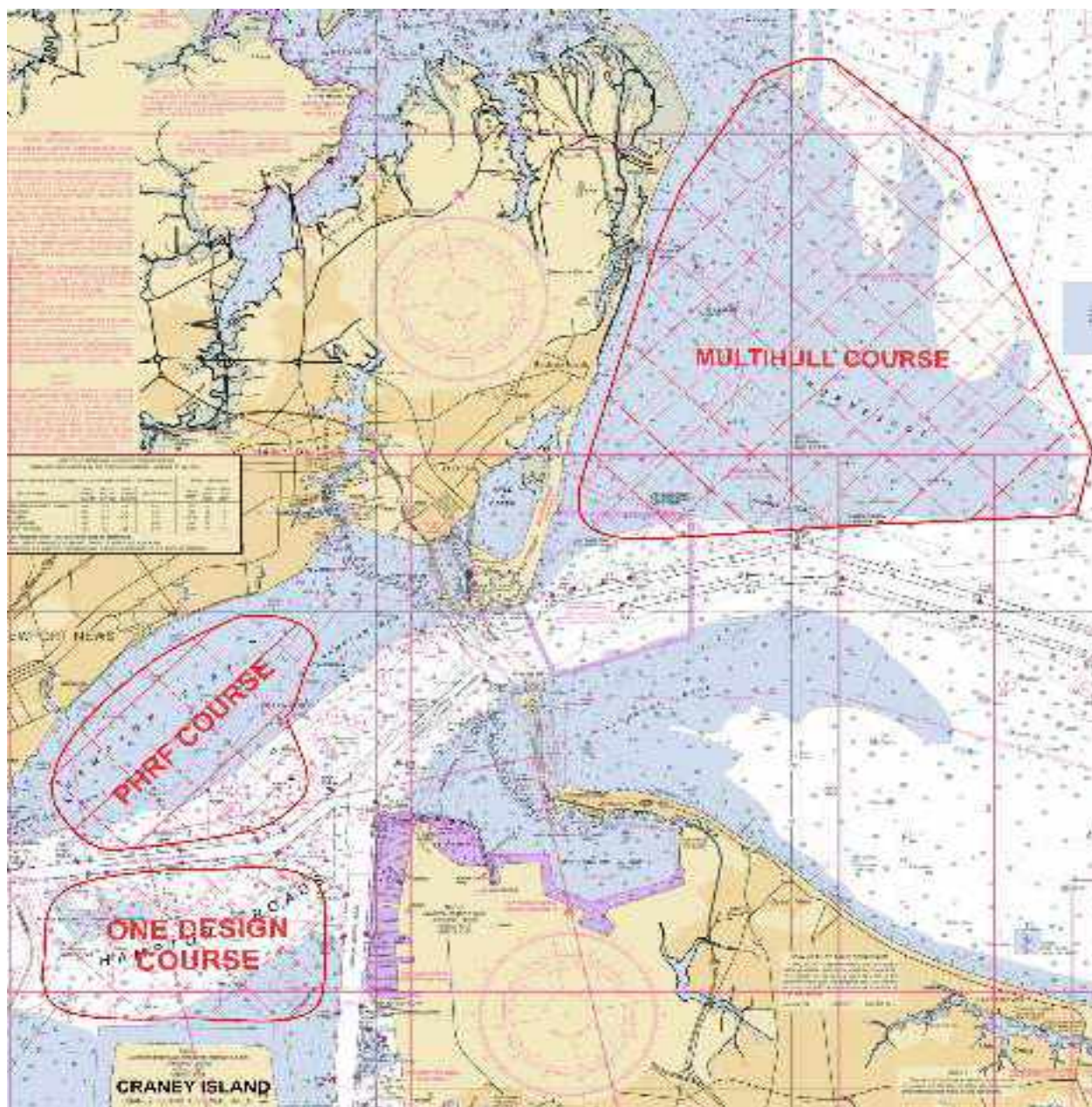
One-Design Course = Brian Deibler

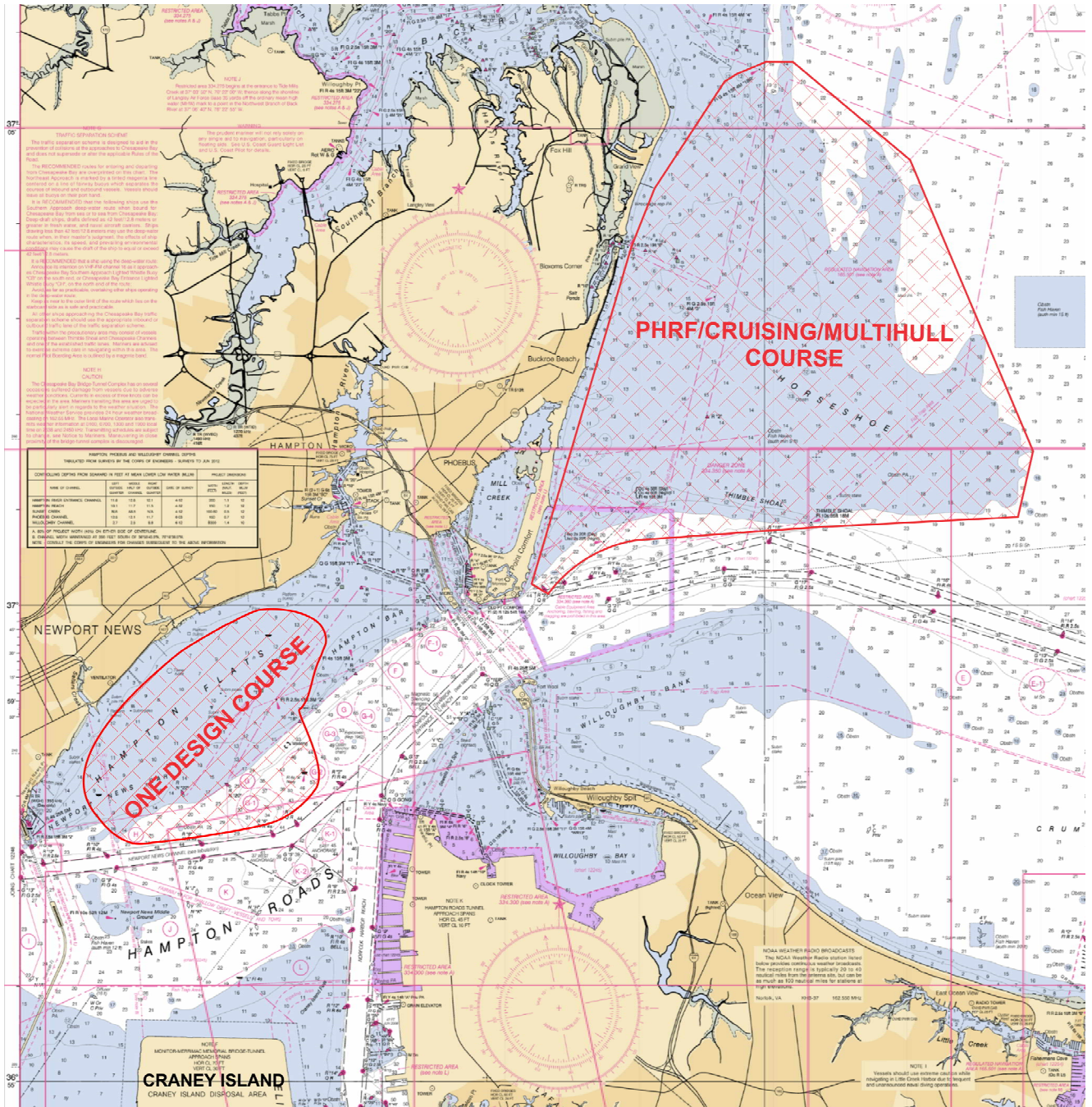
Cruising/Multihull = Tom Connors

Official Scorer = Leanne Cranfill

Chief Judge = Jerry Thompson

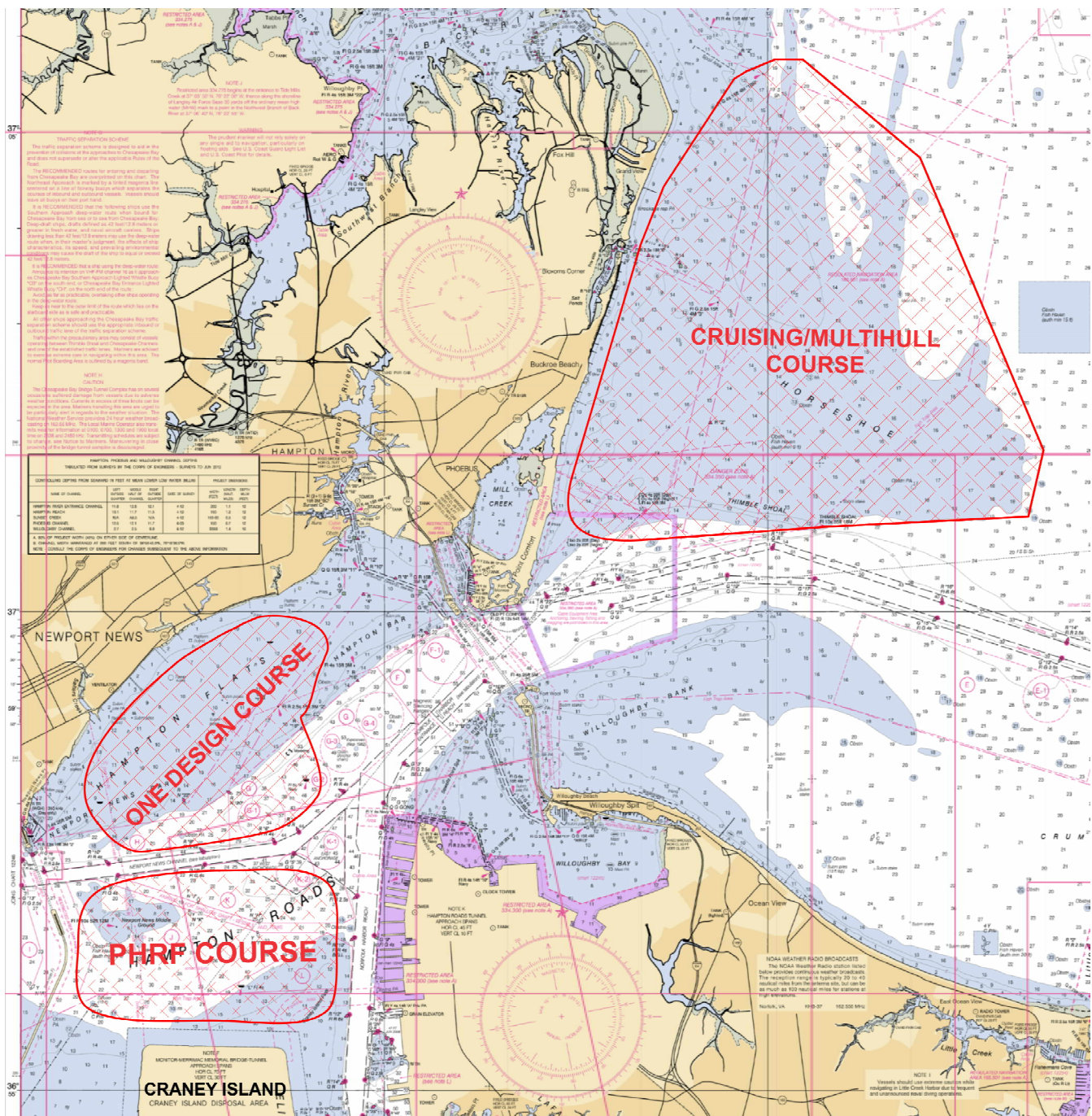
APPENDIX A
RACING AREA - FRIDAY, JUNE 1, 2018



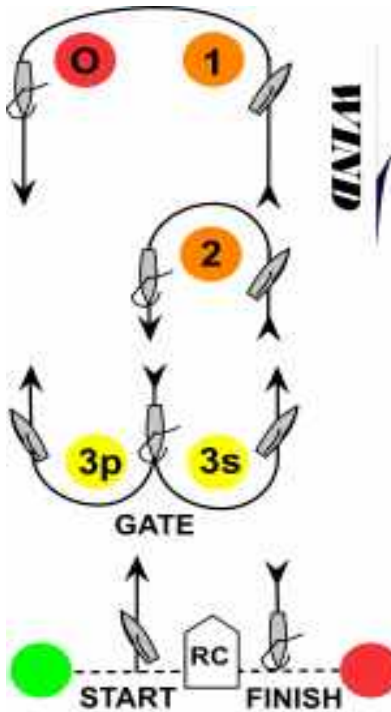


APPENDIX A
RACING AREA - SATURDAY, JUNE 2, 2018

APPENDIX A RACING AREA - SUNDAY, JUNE 3, 2018



**APPENDIX B
ONE-DESIGN COURSE**



* Course will be Windward/Leeward...twice around.

* All marks, except the gate, shall be left to PORT.

* Course Designations:

L = Start – Mark 1 – Offset – Gate – Mark 1 – Offset – Finish

LS = Start – Mark 1 – Offset – Gate – Mark 2 – Finish

S = Start – Mark 2 – Gate – Mark 2 – Finish

* Fleets on top line of course board shall sail course and distance indicated.

* Fleets on bottom line of course board shall sail course and distance indicated.

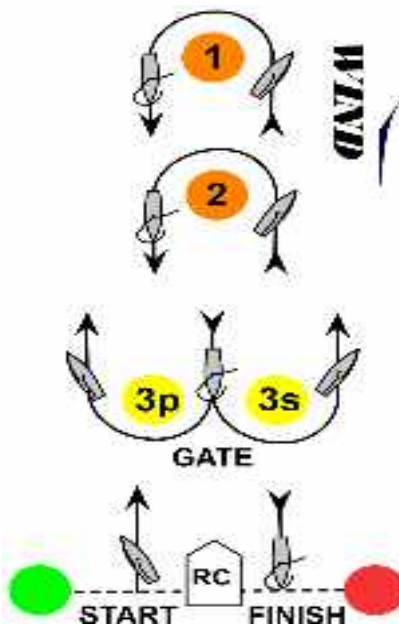
* If only one distance is shown, there is no Mark 2 (Short Weather Mark).

* No Offset Ball will be set with Mark 2 or with any Change Mark.

* If only one leeward mark is present, all boats shall round it to port.

* The angle of the gate may be adjusted without signal.

**APPENDIX C
PHRF COURSE**



* All marks, except the gate, shall be left to PORT.

* Course Designations:

XL = Start – Mark 1 – Gate – Mark 1 – Gate – Mark 2 – Finish

L = Start – Mark 1 – Gate – Mark 1 – Finish

LS = Start – Mark 1 – Gate – Mark 2 – Finish

S = Start – Mark 2 – Gate – Mark 2 – Finish

* Each fleet shall sail the course and leg distance indicated in **BLACK** on the course board.

* Numbers in **RED** indicate the bearing to Marks 1 and 2.

* If the course is changed after the start, only one change mark will be set.

- All boats shall round this one change mark.

- It will be set w/in 0.15 nm of the original distance to **Mark 2**.

* If only one leeward mark is present, all boats shall round it to port.

* The angle of the gate may be adjusted without signal.

**APPENDIX D (Page 1 of 2)
SATURDAY DISTANCE RACE IN BAY - 2018**

MARK DESCRIPTIONS AND LOCATIONS

Starting Mark = Day Beacon R "2" (Off Buckroe)	37 01.98 N	76 15.75 W
Mark "J" FI G 2.5s "1YR" (York River Chan)	37 07.62 N	76 09.85 W
Drop Mark 1 ("D1") Orange Cylinder	37 05.50 N	76 12.60 W
Drop Mark 2 ("D2") Orange Cylinder	37 02.20 N	76 10.50 W
RW Mo (A) WHIS "HC" (Tail of Horseshoe)	37 01.32 N	76 08.97 W
Drop Mark 3 ("D3") Yellow Inflatable	37 03.50 N	76 12.60 W
Mark "X" FI G 2.5s "3" (Salt Ponds Entrance)	37 03.23 N	76 15.65 W
Finish Mark = R "22" (Off Fort Monroe Seawall)	37 00.15 N	76 17.87 W

COURSE DESCRIPTIONS

Super Course - PHRF Super A plus Multihulls

Start at R "2" -- "J" (Star) -- "Mo (A)" (Star) -- "X" (Port) -- Finish at R "22" (23.0 nm)

Course A - PHRF A

Start at R "2" -- "D1" (Star) -- "Mo (A)" (Star) -- "X" (Port) -- Finish at R "22" (18.7 nm)

Course B - PHRF B

Start at R "2" -- "D1" (Star) -- "D2" (Star) -- "X" (Port) -- Finish at R "22" (15.8 nm)

Course C - PHRF C, Non-Spin, and Cruising

Start at R "2" -- "D1" (Star) -- "D3" (Star) -- "X" (Port) -- Finish R "22" (12.3 nm)

**** If light air, the starting line for all fleets may be moved to Mark X. See S.I. 12.5.**

**** Lat/lons are approximate and not intended for navigation.**

**** Unless the course is shortened, all boats will finish at the Fort Monroe Seawall.**

**** All RC radio communications will be via VHF-72, except when finishing.**

**** The Finish Line Team will monitor VHF-9 and may hail boats as they finish. They will respond only to emergency calls or reports of protests/redress. Boats should monitor VHF-9 while finishing and respond to RC requests.**

APPENDIX D (Page 2 of 2)

SATURDAY DISTANCE RACE (IF IN HARBOR) - 2018

**IF SATURDAY'S DISTANCE RACE IS RELOCATED TO THE HARBOR,
BOATS SHALL SAIL THE COURSES SHOWN BELOW**

** Start/Finish Line for all fleets = 36 59.30 N 76 21.50 W (Hampton Flats)

** The Start/Finish Line is between the staff displaying an orange flag on the RC Signal Boat and a green inflatable cylinder.

Mark "W"	Middle Ground Light		36 56.71 N	76 23.48 W
Mark "X"	FI R 6s R "12"	(Norf. Harbor Reach)	36 55.80 N	76 20.46 W
Mark "Q"	Y N "J"	(Shallow Draft Fairway)	36 56.97 N	76 22.40 W
Mark "H"	R N "20"	(Hampton Flats)	36 58.13 N	76 22.03 W
Mark "K"	Q R R "4"	(N News Channel)	36 57.70 N	76 21.10 W
Mark "J"	FI R 4s R "2"	(N News Channel)	36 58.12 N	76 20.53 W
Mark "M"	FI R 4s R "8"	(N News Channel)	36 57.50 N	76 22.35 W
Mark "C"	R N "14"	(Hampton Bar)	36 59.77 N	76 19.40 W
Mark "T"	Day Beacon R "18"	(Hampton Bar)	36 58.78 N	76 21.07 W
Mark "O"	FI R 4s R "10"	(N News Channel)	36 57.36 N	76 23.60 W

Courses to be Sailed by Each Fleet

Super Course – PHRF Super A plus Multihulls

Start – W (port) – H (port) – W (port) – X (port) – Q (star) – C (port)
T (star) – O (star) – Finish (21.7 nm)

Course A – PHRF A

Start – W (port) – X (port) – Q (star) – C (port) – T (star) – O (star) – Finish (18.0 nm)

Course B – PHRF B

Start – W (port) – X (port) – K (star) – C (port) – M (star) – Finish (15.3 nm)

Course C – PHRF C, Non-Spin, and Cruising A

Start – O (port) – J (port) – C (port) – M (star) – Finish (12.3 nm)

Course D – Cruising B only

Start – O (port) – J (port) – C (port) – H (star) – Finish (11.0 nm)

****Lat/Lons are approximate and not intended for navigation.**

****All RC radio communications between the RC and fleet will be via VHF-72.**

APPENDIX E (Page 1 of 2)

MULTIHULL COURSE FRIDAY IN BAY (2 RACES)
CRUISING/MULTIHULL COURSE SUNDAY IN BAY (ONE RACE)

**** ALL FLEETS WILL START AND FINISH AT MARK "Y"**

Day Beacon R "2" (off Buckroe) 37 01.98 N 76 15.75 W

**** POSSIBLE MARKS OF THE COURSE:**

Mark "M"	Thimble Shoal Light	37 00.87 N	76 14.40 W
Mark "J"	FI G 2.5s "1YR" (York River Channel)	37 07.62 N	76 09.85 W
Mark "V"	FI G 4s "1BR" (Back River Entrance)	37 05.62 N	76 15.07 W
Drop Mark "D"	Yellow Inflatable Mark	37 04.00 N	76 15.00 W
Mark "X"	FI G 2.5s "3"	37 03.23 N	76 15.65 W

**** THE COURSE WILL BE DISPLAYED ON THE RC BOAT PRIOR TO WARNING.**

**** POSSIBLE COURSES:**

Course 1P:	Start at "Y" – "M" (Port) – "J" (Port) – Finish at "Y"	(16.6 nm)
Course 1S:	Start at "Y" – "J" (Star) – "M" (Star) – Finish at "Y"	(16.6 nm)
Course 2P:	Start at "Y" – "M" (Port) – "V" (Port) – Finish at "Y"	(10.0 nm)
Course 2S:	Start at "Y" – "V" (Star) – "M" (Star) – Finish at "Y"	(10.0 nm)
Course 3P:	Start at "Y" – "M" (Port) – "D" (Port) – Finish at "Y"	(7.0 nm)
Course 3S:	Start at "Y" – "D" (Star) – "M" (Star) – Finish at "Y"	(7.0 nm)
Course 4P:	Start at "Y" – "M" (Port) – "X" (Port) – Finish at "Y"	(5.4 nm)
Course 4S:	Start at "Y" – "X" (Star) – "M" (Star) – Finish at "Y"	(5.4 nm)

**** Lat/lons are approximate and not intended for navigation.**

**** All communications with the RC will be via VHF-73.**

**** The time limit for all boats is 1415.**

APPENDIX E (Page 2 of 2)

****IF RACING IS RELOCATED TO THE HARBOR FRIDAY AND/OR SUNDAY
THE COURSES SHOWN BELOW SHALL BE USED**

**** Rendezvous in the harbor at Day Beacon R "4" (Mouth of the Hampton River)**

**** All boats will start and finish at Day Beacon "4"**

CRUISING A AND/OR MULTIHULLS WILL SAIL THE FOLLOWING COURSE:

<u>Mark</u>	<u>Location</u>	<u>Leave to</u>	<u>Lat/Lon</u>	
Start at Day Beacon R "4"				
Day Beacon G "1"	Hampton Flats	PORT	36 59.12 N	76 21.60 W
FI R 4s R "6"	N News Channel	PORT	36 57.58 N	76 21.42 W
R N "14"	Hampton Bar	PORT	36 59.77 N	76 19.40 W
R N "20"	Hampton Flats	STAR	36 58.13 N	76 22.03 W
FI R 2.5s 15ft 4M "2"	Hampton Bar	STAR	36 59.03 N	76 21.37 W
Day Beacon R "4"	Mouth of River	FINISH	37 00.18 N	76 20.28 W
Distance = 10.9 nm				

CRUISING B WILL SAIL THE FOLLOWING COURSE

<u>Mark</u>	<u>Location</u>	<u>Leave to</u>	<u>Lat/Lon</u>	
Start at Day Beacon R "4"				
Day Beacon G "1"	Hampton Flats	PORT	36 59.12 N	76 21.60 W
Day Beacon R "18"	Hampton Bar	PORT	36 58.78 N	76 21.07 W
R N "14"	Hampton Bar	PORT	36 59.77 N	76 19.40 W
Day Beacon R "18"	Hampton Bar	STAR	36 58.78 N	76 21.07 W
FI R 2.5s 15ft 4M "2"	Hampton Bar	STAR	36 59.03 N	76 21.37 W
Day Beacon R "4"	Mouth of River	FINISH	37 00.18 N	76 20.28 W
Distance = 7.2 nm				

**** Lat Lons are approximate and not intended for navigation.**

**** The Race Committee will communicate with the fleet on VHF-73.**

SOUTHERN BAY RACE WEEK – 2018

APPENDIX F (Page 1 of 2)

(Preliminary)

FLEET SPLITS, CLASS FLAGS, & ORDER OF STARTS

****This information is preliminary. Only the final Appendix F posted on the Official Notice Board and distributed at the Skippers Meeting is official. Until then, classes may be added, subtracted or sub-divided until the Official Appendix F is posted Thursday.**

FRIDAY & SUNDAY PHRF RACING IN HARBOR

<u>Fleet</u>	<u>Ratings</u>	<u>Class Flag (on RC Boat)</u>	<u>Class ID (on backstay)</u>
PHRF A	TBA	Code Flag "9"	Code Flag "9"
Super A	TBA	Code Flag "1"	Code Flag "1"
PHRF B	110-151	Code Flag "6"	Code Flag "6"
PHRF C	Over 152	Code Flag "7"	Code Flag "7"
Non-Spin (2HS)	All Ratings	Code Flag "5"	Code Flag "5"

DAILY ONE-DESIGN RACING IN HARBOR

<u>Fleet</u>	<u>Ratings</u>	<u>Class Flag (on RC Boat)</u>	<u>Class ID (on backstay)</u>
Viper 640	One Design	White Flag/Red Viper Logo	White Ribbon
J-70	One-Design	Blue Flag/White J-70 Logo	Blue Ribbon
J-24	One-Design	Green Flag	Green Ribbon

MULTIHULLS IN BAY (Friday)

Multihull	All Ratings	Blue Flag	Blue Ribbon
------------------	--------------------	------------------	--------------------

APPENDIX F (Page 2 of 2)

SATURDAY DISTANCE RACE

<u>Fleet</u>	<u>Ratings</u>	<u>Class Flag (on RC Boat)</u>	<u>Class ID (on backstay)</u>
Multihulls	All Ratings	Blue Flag	Blue Ribbon
Super A	TBA	Code Flag "1"	Code Flag "1"
PHRF A	TBA	Code Flag "9"	Code Flag "9"
PHRF B	110-151	Code Flag "6"	Code Flag "6"
PHRF C	Over 152	Code Flag "7"	Code Flag "7"
Non-Spin (2HS)	All Ratings)	Code Flag "5"	Code Flag "5"
Cruising B	TBA	Green Flag	Green Ribbon
Cruising A	TBA	White Flag	White Ribbon

SUNDAY CRUISING/MULTIHULL COURSE (Bay)

<u>Fleet</u>	<u>Ratings</u>	<u>Class Flag (on RC Boat)</u>	<u>Class ID (on backstay)</u>
Multihulls	All Ratings	Blue Flag	Blue Ribbon
Cruising A	Under 154	White Flag	White Ribbon
Cruising B	Over 155	Green Flag	Green Ribbon

Note to all fleets: As per S.I. 3.4, all boats must display the appropriate class flag or ribbon from the backstay. (DP)

Note to all fleets: For fleets flying ribbons, the appropriate ribbon will be provided to each boat in her Skippers Bag given out at Check-In Thursday.